

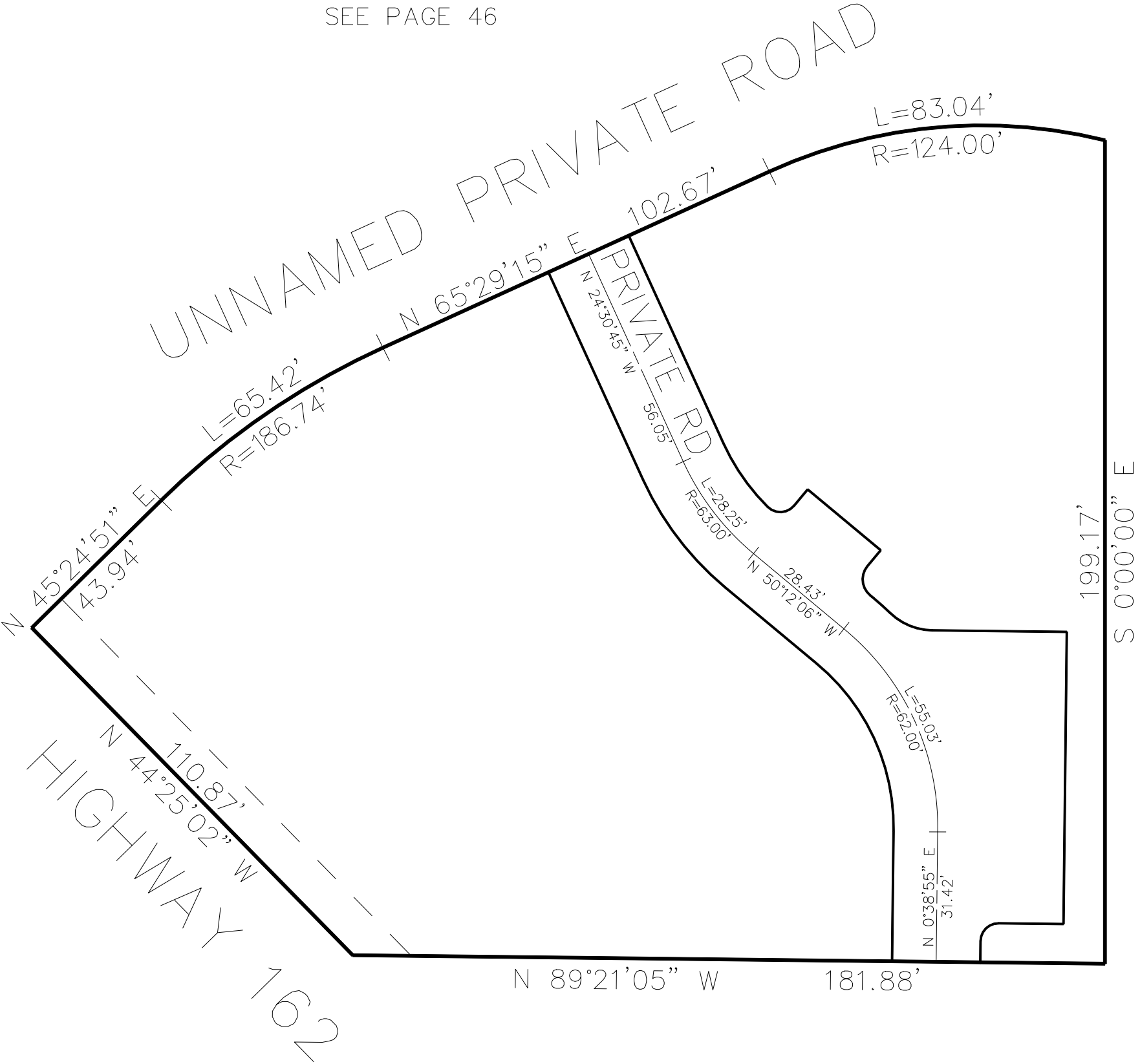
PART OF THE NW.1/4, OF SECTION 34, T.7N., R.1E., S.L.B. & M.
LITTLE BEAR CONDOMINIUM LOT 3 1ST AMENDMENT

320

IN WEBER COUNTY
SCALE 1" = 30'

TAXING UNIT: 28

SEE PAGE 46



SEE PAGE 154

UNIT	SERIAL #	OWNERSHIP
1	223200001	EDEN PROPERTIES LLC
2	223200002	OGDEN VALLEY PIZZA LLC
3	223200003	VALLEY WINE & SPIRITS LLC
4	223200004	BOON AUM LLC
5	223200005	PARAGON GROUP LLC
6	223200006	EDEN PROPERTIES LLC
7	223200007	EDEN PROPERTIES LLC
8	223200008	EDEN PROPERTIES LLC
C.A.	223200009	LITTLE BEAR CONDO LOT 3 1ST AMD OWNERS ASSN.

SEE PAGE 46

10' UTILITY & DRAINAGE EASEMENTS EACH
SIDE OF PROPERTY LINES AS INDICATED
BY DASHED LINES EXCEPT AS OTHERWISE
SHOWN.

FOR COMPLETE ENG DATA SEE
ORIGINAL DEDICATION PLAT IN
BOOK 75, PAGE 51-53 OF RECORDS.